

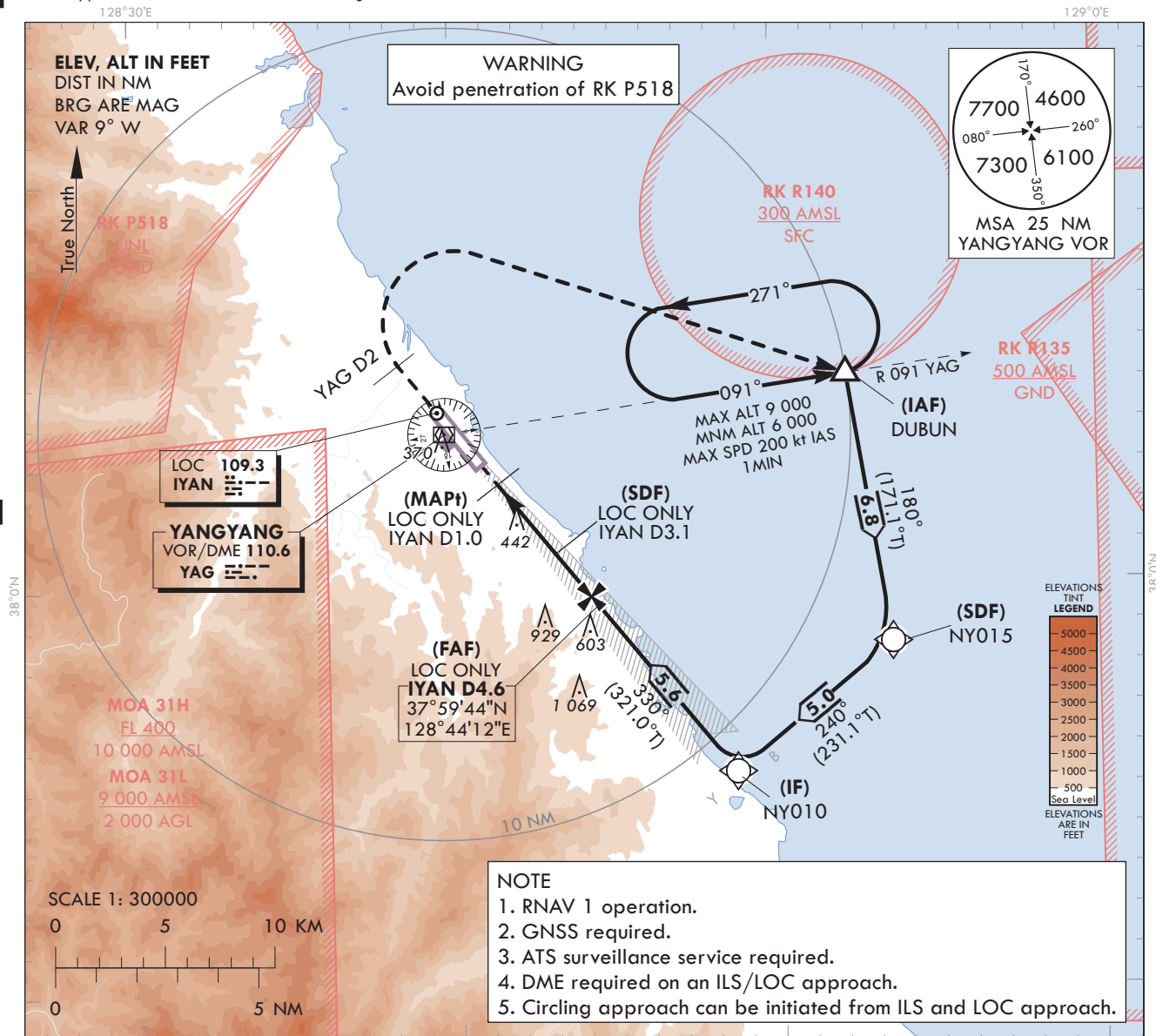
**INSTRUMENT  
APPROACH  
CHART - ICAO**

AERODROME ELEV 241 ft  
HEIGHTS RELATED TO  
THR RWY 33 - ELEV 227 ft

GANGNEUNG APP 124.6  
YANGYANG TWR 118.85  
124.375

**YANGYANG/Intl(RKNY)**  
ILS Z or LOC Z RWY 33

Note : Approach and circle-to-land Under ICAO Flight Procedures.



RECOMMENDED PROFILE(LOC ONLY)	DME IYAN	4	3	2
Final Approach Gradient 5.31%(323 ft/NM)	ALT(HGT)	1 523 (1 296)	1 200 (973)	878 (651)

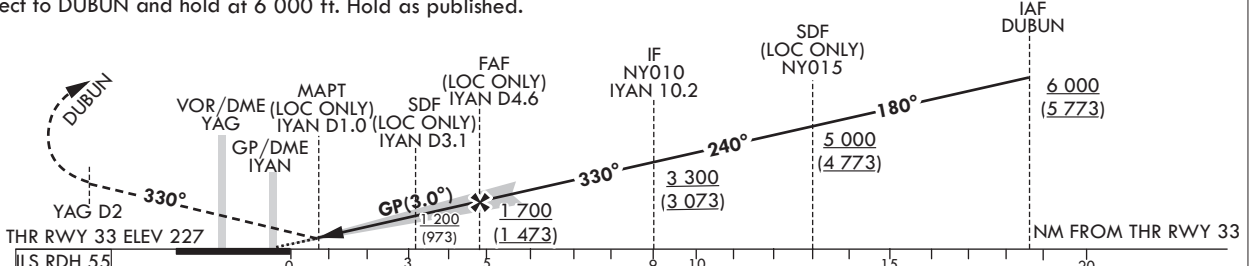
TRANSITION ALT 14 000  
TRANSITION LVL FL 140

**MISSED APPROACH**

Climb straight ahead until YAG D2, then turn right direct to DUBUN and hold at 6 000 ft. Hold as published.

**NOTE**

1. Missed approach turn limited to 200 kt IAS maximum.



CATEGORY		DA(H)/MDA(H)	A	B	C	D	Rate of descent	Knots	60	90	120	150	180
STA	CAT 1	FULL	427 (200)	RVR 550 m, VIS 800 m				V/V fpm	318	478	637	796	955
		ALS INOP		1 200 m									
	LOC	FULL	700 (473)	1 500 m									
		ALS INOP		2 200 m									
Circling			700(459) 2 100 m	740(499) 2 800 m	1 210(969) 4 500 m	1 230(989) 4 600 m	*Timing Not authorized for defining MAPt. *Circling Not authorized west of RWY 15-33, area on between R 150 and R 315 YAG and area beyond 6 DME of between R 315 and R 360 YAG.						

Change : Amended phrases for note and SDF(LOCO ONLY → LOC ONLY).

YANGYANG/IntI(RKNY)  
ILS Z or LOC Z RWY 33

## AERONAUTICAL DATA TABULATION

ILS/LOC Z Approach to RWY 33 from DUBUN		
Fix/Point		Coordinates
DUBUN(IAF)		38°05'14.5"N 128°52'13.8"E
NY015(SDF)		37°58'31.2"N 128°53'33.6"E
NY010(IF)		37°55'22.3"N 128°48'38.8"E
D4.6 IYAN(FAF LOC ONLY)	BRG 329.92° / 4.55 NM IYAN	37°59'43.9"N 128°44'11.5"E
D3.1 IYAN(SDF LOC ONLY)	BRG 329.92° / 3.10 NM IYAN	38°00'51.7"N 128°43'02.1"E
D1.0 IYAN(MAPt LOC ONLY)	BRG 329.92° / 1.00 NM IYAN	38°02'29.7"N 128°41'21.8"E
THR RWY 33		38°03'09.21"N 128°40'41.25"E
IYAN DME		38°03'13.8"N 128°40'30.0"E
D2 YAG	HDG 330	38°05'28.5"N 128°38'18.4"E
DUBUN	R 091 YAG/ 10.00 NM YAG	38°05'14.5"N 128°52'13.8"E

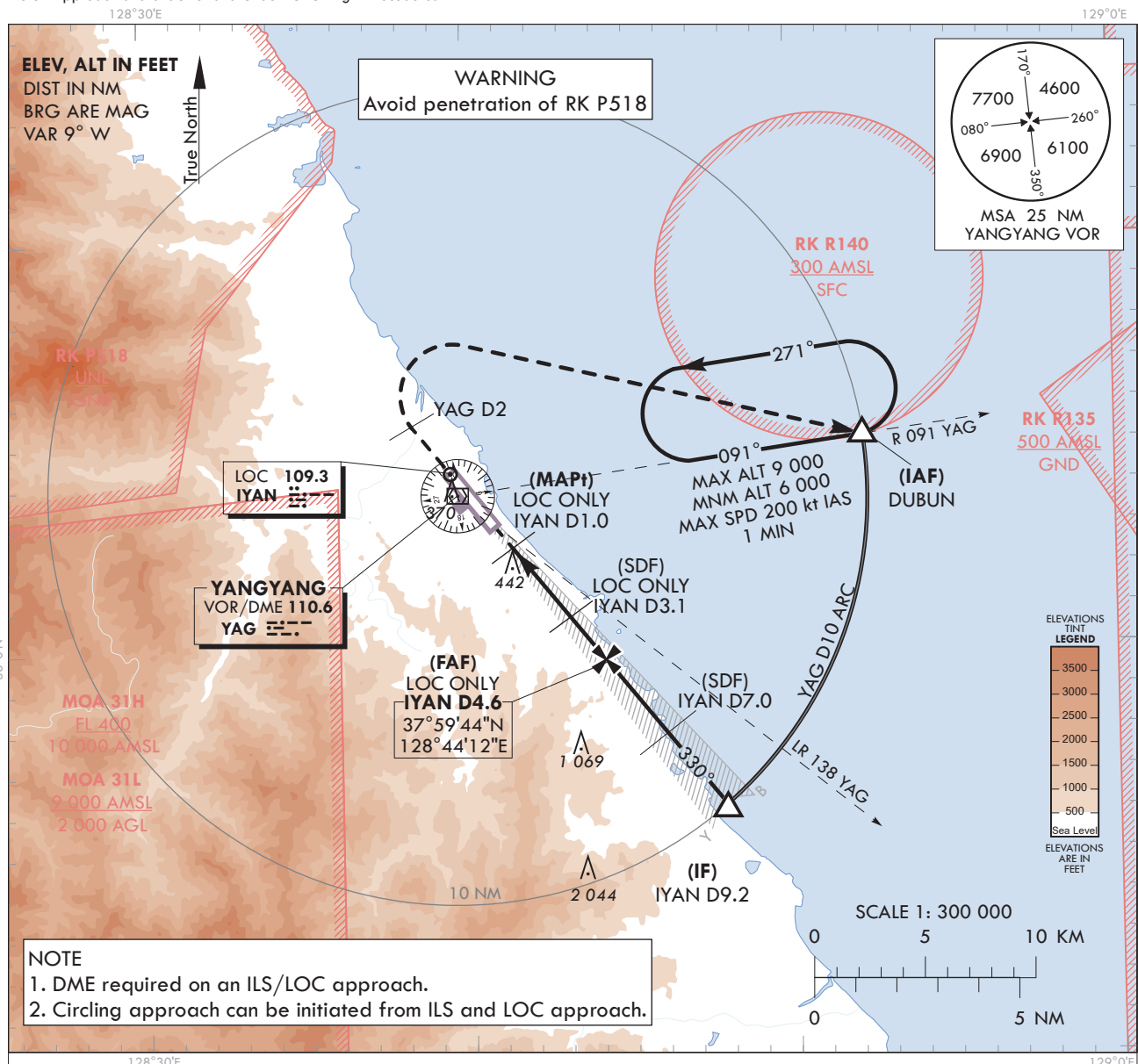
**INSTRUMENT  
APPROACH  
CHART - ICAO**

AERODROME ELEV 241 ft  
HEIGHTS RELATED TO  
THR RWY 33 - ELEV 227 ft

GANGNEUNG APP 124.6  
YANGYANG TWR 118.85  
124.375

**YANGYANG/Intl(RKNY)**  
**ILS Y or LOC Y RWY 33**

Note : Approach and circle-to-land Under ICAO Flight Procedures.



RECOMMEND PROFILE(LOC ONLY)		DME YAG	4	3	2	NOTE Missed approach turn limited to 200 kt IAS maximum.
Final Approach Gradient 5.31%, 323 ft/NM		ALT(HGT)	1 523 (1 296)	1 200 (973)	878 (651)	

MISSED APPROACH

Climb straight ahead until YAG D2, then turn right to DUBUN and hold at 6 000 ft. Hold as published.

TRANSITION ALT 14 000  
TRANSITION LVL FL 140

IAF DUBUN  
R 091 YAG/D10  
6 000  
(5 773)

THR RWY 33 ELEV 227  
ILS RDH 55

YAG D2

VOR/DME YAG

GP/DME IYAN

MAPt (LOC ONLY) IYAN D1.0

SDF (LOC ONLY) IYAN D3.1

FAF (LOC ONLY) IYAN D4.6

SDF IYAN D7.0

IF IYAN D9.2

LR 138 YAG

GP(3.0°)

330°

330°

YAG D10 ARC

NM FROM THR RWY 33

1 700  
(1 473)

2 500  
(2 273)

3 200  
(2 973)

6 000  
(5 773)

CATEGORY		DA(H)/MDA(H)	A	B	C	D	Rate of descent	Knots	60	90	120	150	180
STA	CAT 1	FULL	427 (200)	RVR 550 m, VIS 800 m				V/V fpm	318	478	637	796	955
		ALS INOP	1 200m										
	LOC	FULL	700 (473)	1 500m									
		ALS INOP	2 200m										
Circling			700(459) 2 100m	740(499) 2 800m	1 210(969) 4 500m	1 230(989) 4 600m	*Timing Not authorized for defining MAPt. *Circling Not authorized west of RWY 15-33, area on between R 150 and R 315 YAG and area beyond 6 DME of between R 315 and R 360 YAG.						

Change : Amended phrases for note, FAF(LOC ONLY), IAF(R 090 YAG → R 091 YAG) and profile view.

YANGYANG/Intl(RKNY)  
ILS Y or LOC Y RWY 33

## AERONAUTICAL DATA TABULATION

ILS/LOC Y Approach to RWY 33 from DUBUN		
Fix/Point		Coordinates
DUBUN(IAF)		38°05'14.5"N 128°52'13.8"E
D9.2 IYAN(IF)	BRG 329.92° / 9.16 NM IYAN	37°56'08.9"N 128°47'51.2"E
D7.0 IYAN(SDF)	BRG 329.92° / 7.00 NM IYAN	37°57'49.6"N 128°46'08.4"E
D4.6 IYAN(FAF LOC ONLY)	BRG 329.92° / 4.55 NM IYAN	37°59'43.9"N 128°44'11.5"E
D3.1 IYAN(SDF LOC ONLY)	BRG 329.92° / 3.10 NM IYAN	38°00'51.7"N 128°43'02.1"E
D1.0 IYAN(MAPt LOC ONLY)	BRG 329.92° / 1.00 NM IYAN	38°02'29.7"N 128°41'21.8"E
THR RWY 33		38°03'09.21"N 128°40'41.25"E
IYAN DME		38°03'13.8"N 128°40'30.0"E
D2 YAG	HDG 330	38°05'28.5"N 128°38'18.4"E
DUBUN	R 091 YAG/ 10.00 NM YAG	38°05'14.5"N 128°52'13.8"E

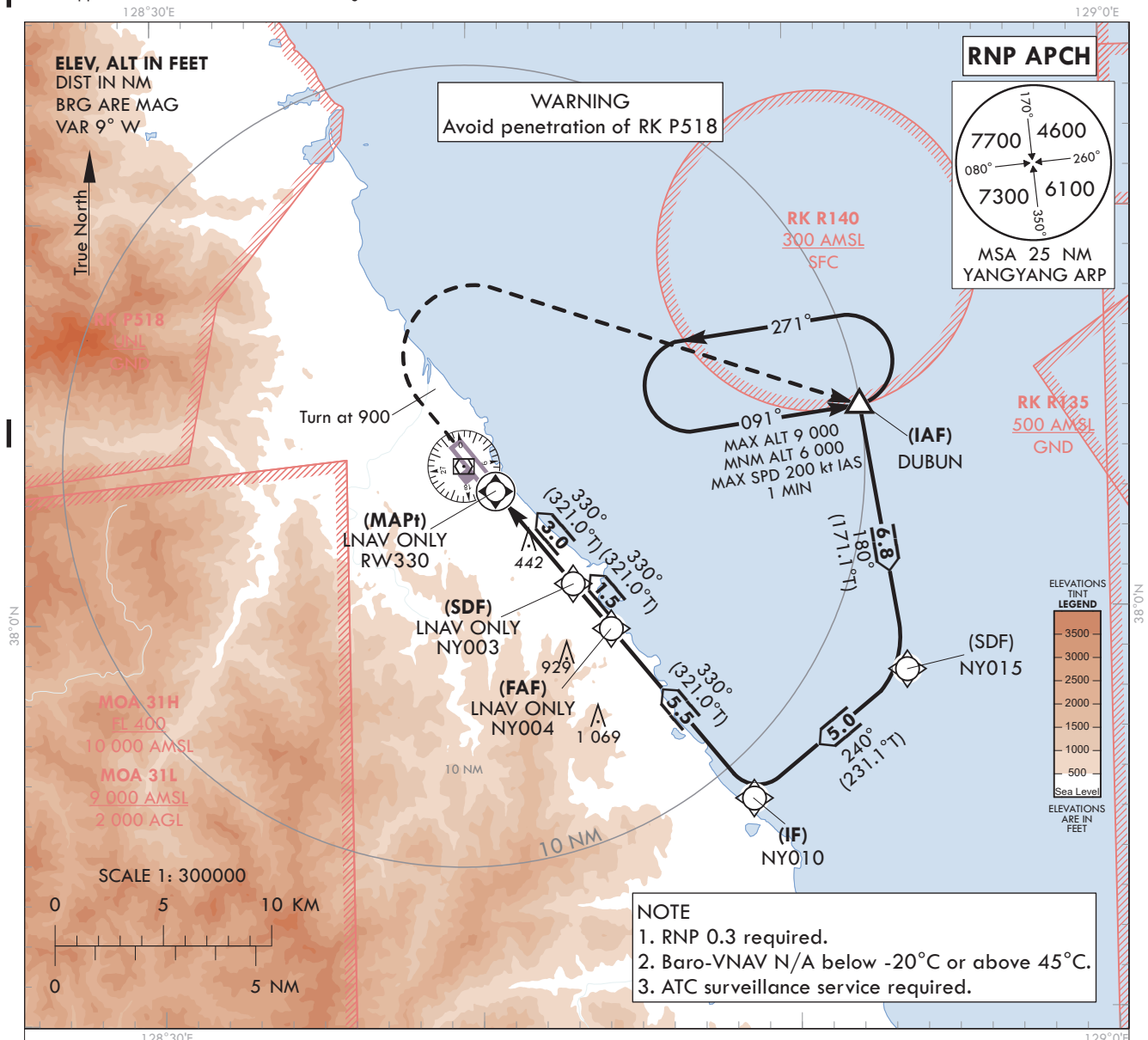
**INSTRUMENT  
APPROACH  
CHART - ICAO**

AERODROME ELEV 241 ft  
HEIGHTS RELATED TO  
THR RWY 33 - ELEV 227 ft

GANGNEUNG APP 124.6  
YANGYANG TWR 118.85  
124.375

**YANGYANG/Intl(RKNY)**  
**RNP RWY 33**

Note : Approach and circle-to-land Under ICAO Flight Procedures.

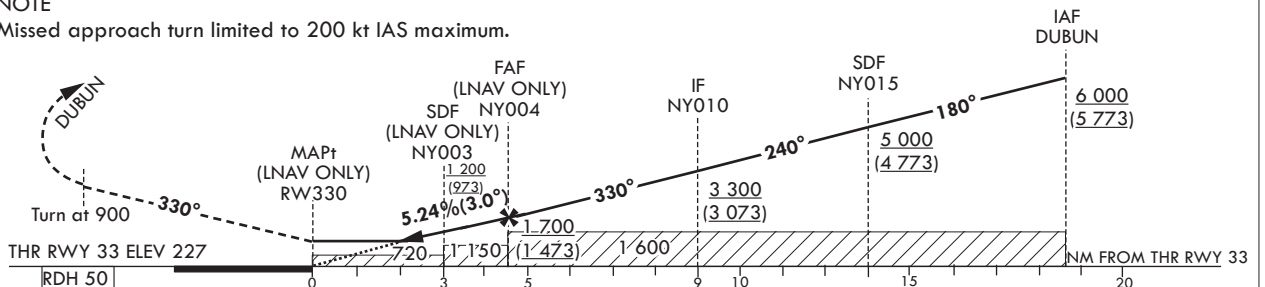


**MISSED APPROACH**

Climb on HDG 330° to 900 ft,  
then turn right to DUBUN and hold at 6 000 ft. Hold as published.

**NOTE**

Missed approach turn limited to 200 kt IAS maximum.



								Knots	60	90	120	150	180	
CATEGORY			DA(H)/MDA(H)	A	B	C	D	Rate of descent	V/V fpm	318	478	637	796	955
STA	LNAV/VNAV	FULL	640 (413)	1 200 m				*Timing Not authorized for defining MAPt. *Circling Not authorized west of RWY 15-33, area on between R 150 and R 315 YAG and area beyond 6 DME of between R 315 and R 360 YAG.						
		ALS INOP		1 900 m										
	LNAV	FULL	720 (493)	1 500 m										
		ALS INOP		2 300 m										
Circling				720(479) 2 200 m	740(499) 2 800 m	1 210(969) 4 500 m	1 230(989) 4 600 m							

Change : Amended phrases for note and MAX ALT(7 000 → 9 000).

## AERONAUTICAL DATA TABULATION

## Instrument Approach Procedure Coding Tables

RNP RWY 33 - via DUBUN(IAF)

Serial Number	Path Descriptor	Waypoint Identifier	Fly-over	Course/Track °M(°T)	Distance (NM)	Turn direction	Altitude (ft)	Speed (kt)	Coordinates	VPA/ TCH*	Navigation specification	Remarks
001	IF	DUBUN	-	-	-	-	+6 000	-	38°05'14.5"N 128°52'13.8"E	-	RNP APCH	IAF
002	TF	NY015	-	180(171.1)	6.8	-	+5 000	-	37°58'31.2"N 128°53'33.6"E	-	RNP APCH	SDF
003	TF	NY010	-	240(231.1)	5.0	-	+3 300	-	37°55'22.3"N 128°48'38.8"E	-	RNP APCH	IF
004	TF	NY004	-	330(321.0)	5.5	-	+1 700	-	37°59'40.6"N 128°44'14.9"E	-	RNP APCH	FAF
005	TF	NY003	-	330(321.0)	1.5	-	+1 200	-	38°00'49.2"N 128°43'04.7"E	-	RNP APCH	SDF
006	TF	RW330	Y	330(321.0)	3.0	-	+720	-	38°03'09.21"N 128°40'41.25"E	-3.00/50	RNP APCH	MAPt
007	VA	ALT	Y	330(321.0)	-	R	+900	-200	-	-	RNP APCH	-
008	DF	DUBUN	Y	-	-	L	@6 000	-200	38°05'14.5"N 128°52'13.8"E	-	RNP APCH	MAHF

## HOLDING PROCEDURE

Holding Identification	Path Descriptor	Waypoint Identifier	Fly-over	Course/Track °M(°T)	Time (Min)	Turn direction	Altitude (ft)	Speed (kt)	Coordinates	VPA/ TCH*	Navigation specification	Remarks
RNP RWY 33	HM	DUBUN	Y	091(081.7)	1	L	-9 000 +6 000	-200	38°05'14.5"N 128°52'13.8"E	-	RNAV 1	1 MIN (Outbound Leg)

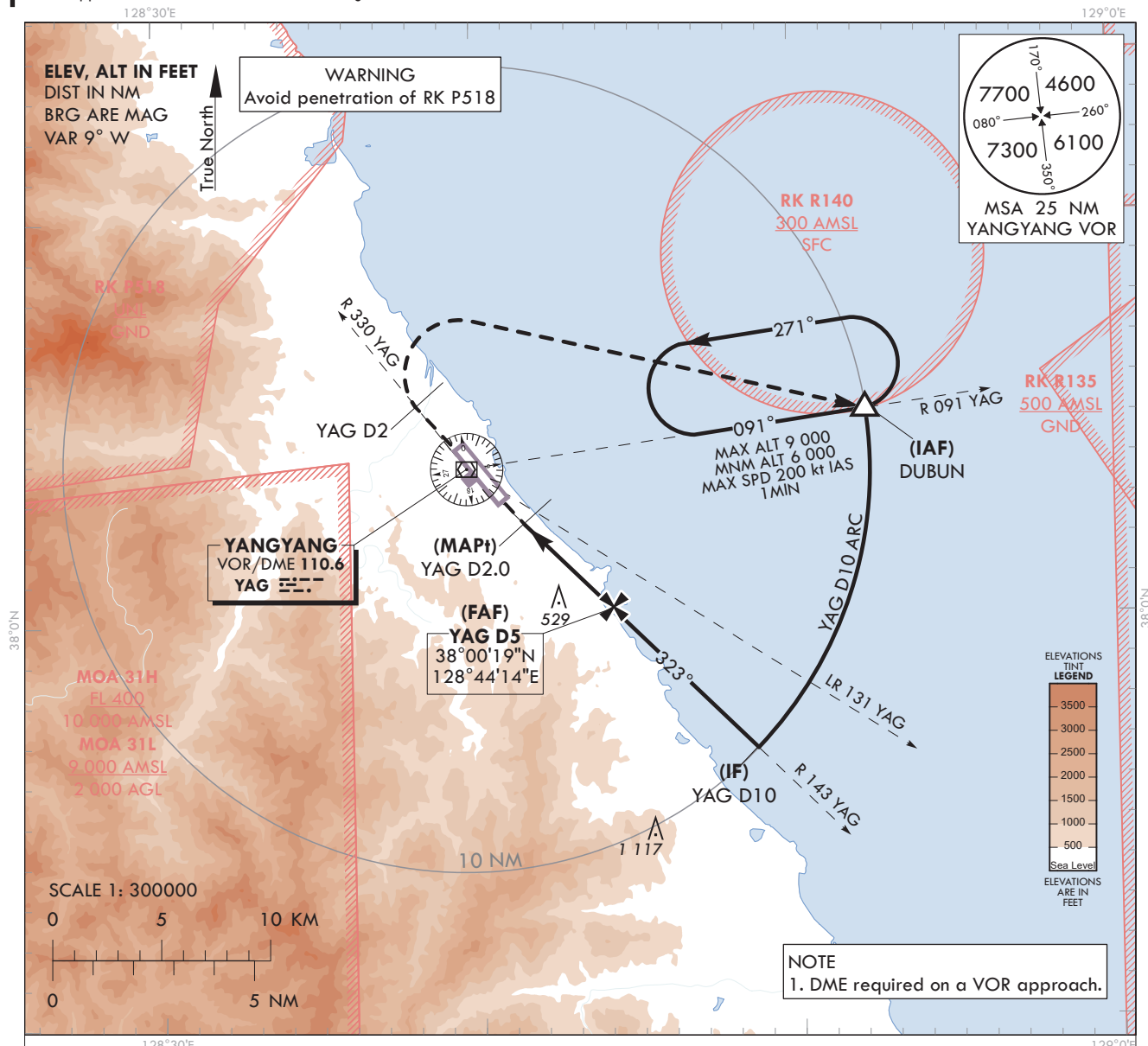
\* The term TCH equates to the use of the term RDH, within this context of the FAS data block.

AERODROME ELEV **241** ft  
HEIGHTS RELATED TO  
THR RWY 33 - ELEV **227** ft

GANGNEUNG	APP	124.6
YANGYANG	TWR	118.85
		124.375

**YANGYANG/Intl(RKNY)**  
**VOR RWY 33**

128°30'E



RECOMMENDED PROFILE(LOC ONLY)	DME YAG	5	4	3
Final Approach Gradient 5.44%, 330 ft/NM	ALT(HGT)	1600 (1 373)	1 269 (1 042)	938 (711)

NOTE

Missed approach turn limited to 200 kt IAS maximum.

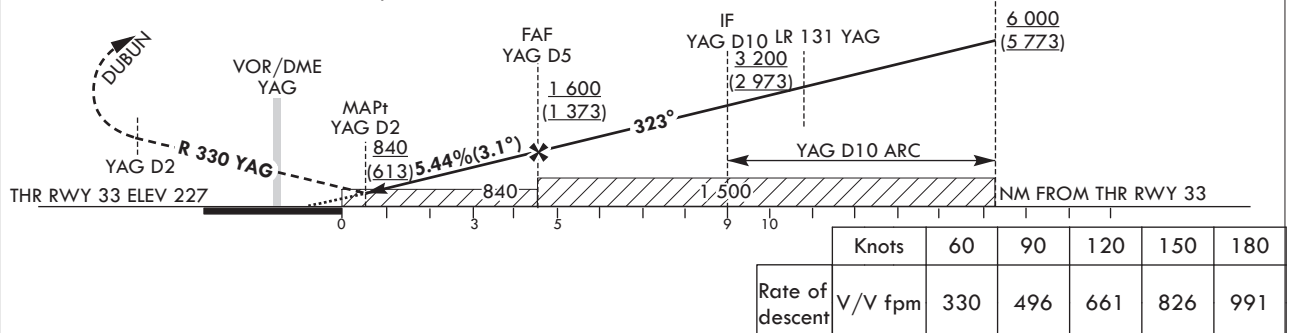
### MISSED APPROACH

Climb on R 330 YAG until 2 DME, then turn right to DUBUN and hold at 6 000 ft. Hold as published.

TRANSITION ALT 14 000

TRANSITION LVL FL 140

IAF  
DUBUN  
R 091 YAG/D10



CATEGORY		MDA(H)	A	B	C	D	
STA	FULL	840	2 100 m				*Timing Not authorized for defining MAPt. *Circling Not authorized west of RWY 15-33, area on between R 150 and R 315 YAG and area beyond 6 DME of between R 315 and R 360 YAG.
	ALS INOP	(613)	2 800 m				
Circling			840(599) 2 700 m	840(599) 2 800 m	1 210(969) 4 500 m	230(989) 4 600 m	

Change : Amended phrase for note.

YANGYANG/Intl(RKNY)  
VOR RWY 33

## AERONAUTICAL DATA TABULATION

VOR Approach to RWY 33 from DUBUN		
Fix/Point		Coordinates
DUBUN(IAF)		38°05'14.5"N 128°52'13.8"E
D10.0 YAG(IF)	BRG 323.00° / 10.00 NM YAG	37°56'49.6"N 128°48'46.6"E
D5.0 YAG(FAF)	BRG 323.00° / 5.00 NM YAG	38°00'18.8"N 128°44'14.2"E
D2.0 YAG(MAPt)	BRG 323.00° / 2.00 NM YAG	38°02'24.3"N 128°41'30.7"E
THR RWY 33	Final Approach Descent Angle 3.11°	38°03'09.21"N 128°40'41.25"E
YAG VOR/DME		38°03'48.0"N 128°39'41.3"E
D2 YAG	R 330 YAG/ 2.00 NM YAG	38°05'21.3"N 128°38'06.0"E
DUBUN	R 091 YAG/ 10.00 NM YAG	38°05'14.5"N 128°52'13.8"E